

NE COR. SE 1/4 SE 1/4 SEC. 23

NE COR. SE 1/4 SEC. 23
SEE 23

OSWALD DR?

N.E. COR. S.E. 1/4
SEC. 23

BRASS
CAP

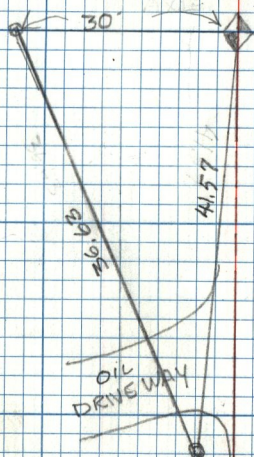
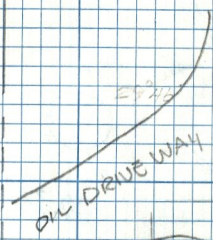
30'

26.10' ±

41.57

OIL
DRIVEWAY

BRASS CAP
IN CONCRETE.



[A]

[B]

N

N